

ETĒLINE

A COLLECTIVE OF TALENTS



BANCU BENCH

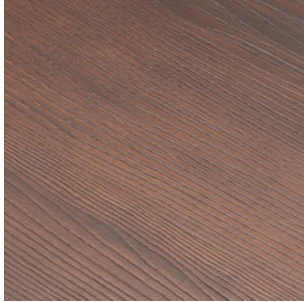
Julien Scarbonchi



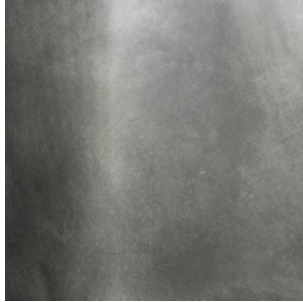
DIMENSIONS

67.75W (172cm) x 16.5D (42cm) x 17.75H (45cm)

SELECTED MATERIALS/FINISHES



VARNISHED BRUSHED
ASH TREE - JULIEN
SCARBONACHI



OXIDIZED ALUMINUM -
JULIEN SCARBONACHI

SPECIFICATIONS

Weight: 90 LBS

Lead time: 18-20 weeks

Signed By Artist

Numbered

Includes Certificate of Authenticity

HANDMADE IN FRANCE

Bespoke Options Available, Please Inquire: Contact@eteline.com

Care properly for your product: [CARE & MAINTENANCE](#)

Read Our: [PRIVACY POLICY](#)

