

ETĒLINE

A COLLECTIVE OF TALENTS



AVENA SCONCE

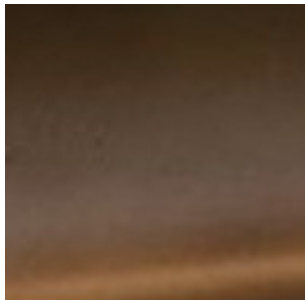
OA London



DIMENSIONS

6.25W (16cm) x 4D (10cm) x 37H (94cm)

SELECTED MATERIALS/FINISHES



CAST Light Patinated
Bronze 500B



PATE DE VERRE-CAST
CRYSTAL

SPECIFICATIONS

Weight: 13 LBS

Lead time:

UL Components

Integrated LED

LED Temperature: 2700K

Signed By Artist

Includes Certificate of Authenticity

HANDMADE IN FRANCE

Bespoke Options Available, Please Inquire: Contact@eteline.com

Care properly for your product: [CARE & MAINTENANCE](#)

Read Our: [PRIVACY POLICY](#)

